



**Essex County  
Infrastructure Services Department**

**Essex County Highways  
2018 Construction Program**

**Peter Bziuk P. Eng.  
Manager Design and Construction  
Services**



# Essex County Highways

- 2018 Construction Program Highlights
  - **\$30,700,000** expenditure level
  - Rehabilitation Program (\$11.3 M)
  - Capacity Improvement Program(\$9.6M)
  - CWATS Implementation (\$9.8 M)



# Rehabilitation Program

- **31 Planned Projects**
  - 6 Bridges ( 4 Construction, 2 Engineering )
  - 7 Culverts ( 5 Construction, 2 Engineering )
  - 18 Roads
  - Miscellaneous Maintenance Projects



# Capacity Improvement Program

- County is continuing a multi year capacity improvement program for the network
- Senior level funding includes
  - Federal Gas Tax \$2.26M
  - Ontario Community Infrastructure Fund \$531,770



# Essex County Highways

- **Bridge Projects (\$1,850,000)**
  - 4 Structure Rehabilitations (etender low bidder)
    - CR 12 at McLean Drain Front Construction
    - CR 20 at Canard River Facca
    - CR 20 at Wigle Creek Intrepid General
    - CR 42 at Tremblay Creek Front Construction
  - 2 Engineering projects for 2019 construction:
    - CR 2 at Little Creek Haddad Morgan
    - CR 42 at Puce River Landmark



# Essex County Highways

- **Culvert / Drainage ( \$2,565,000 )**

- CR 34 at Wilkinson Shilson Drain - March 29 etender
- CR 27 at Cottam Outlet Drain
- CR 11 at Webster Drain
- CR 29 at #5 Drain
- CR 20 at South 7<sup>th</sup> Concession Drain
  
- 2 Engineering projects for 2019 construction
  - CR 34 at Hillman Creek                      Hrycay Consulting
  - CR 27 @ Billing Drain                         R.C. Spencer



# Essex County Highways

## Road Projects (\$6,330,000)

– Recycling/Resurfacing 40.25 km (10 % more than 2017)

- CR 1- Lakeshore / Chatham Kent
- CR 8 – Amherstburg / Tecumseh
- CR 18 – Amherstburg
- CR 20 - Kingsville
- CR 34 – Kingsville
- CR 46 – Lakeshore
- CR 2 – Lakeshore (3 locations)
- CR 11, CR 13, CR 15 - Essex
- CR 42– Lakeshore
- CR 34 - Leamington
- CR 19 – Tecumseh / Lakeshore
- CR 20 – LaSalle / Windsor CCL



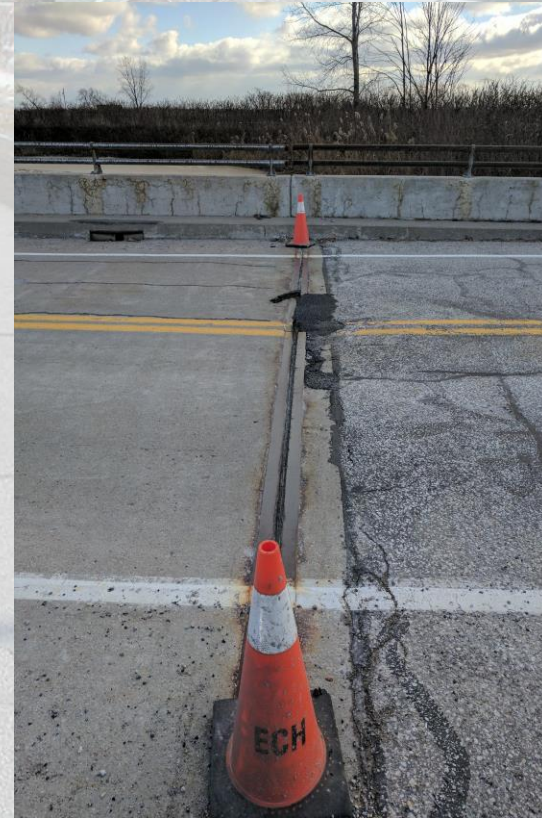
# Essex County Highways

- **Road Projects (\$6,330,000)**
  - Recycling/Resurfacing 40.25 km
  - Cold in place asphalt works (etender Coco Paving)
  - Surface asphalt over Cold in Place (etender Mill Am)
  - Mill and pave works (etender closing April)
  - Partial pave shoulder works
  - Intersection works



# Essex County Highways

- **Pavement Preservation ( \$100,000 )**
  - Base repairs at various locations
  - Route and Seal at various locations
- **Bridge / Culvert Preservation (\$320,000)**
  - Various deck and expansion joint repairs
  - Various guiderail repairs / upgrades
- **Estimated Quantities**
  - 42,070 tonnes of Hot Mix Asphalt
  - 90,000 sq. m. of Pavement Recycling
  - 37,500 tonnes of Granular A





# Essex County Highways

- **Capacity Projects ( +/- \$9.6 M)**
  - CR 22 Phase 6a (I. C. Roy intersection)
    - MOE approval received March 8 2018
    - Anticipate April tender for 2018 construction
  - Detailed Design Projects
    - CR 42 / CR 43 Roundabout
    - CR 23 widening south of CR 18 (3 km)
    - CR 42 detailed design, City limit to CR 19
    - CR 11 South Talbot Roundabout



# Essex County Highways

- **Connecting Link projects with Towns**
  - CR 22 West Belle River Road RAB - Lakeshore
  - CR 19 Phase 3 – Tecumseh
  - CR 3 (Malden) Mill and Pave – LaSalle
  - CR 22 (Notre Dame) - Lakeshore



# Essex County Highways

- **CWATS Projects ( +/- \$9.8 M)**
  - CR 50 Kingsville
  - CR 50 Essex
  - CR 2, CR11, CR 15 etender Mill Am
  - CR 18 etender Coco Paving
  - CR 2 Lakeshore
  - CR 20 Kingsville



# Essex County Highways

- **Environmental Assessments:**
  - CR 20 EA, Kingsville / Leamington
    - To be complete in 2018
  - Transportation Master Plan Update
    - Includes Road Rationalization Study



# Essex County Highways

- Thank you for your interest,
- Thank you for your support in delivering our annual programs,
- Looking forward to working safely through the 2018 construction season.