



# **Infrastructure Services Department 2022 Construction Program**

**Karyn Templin, P.Eng.**

Design Engineer and  
Acting Manager, Design and Construction

# HIGHLIGHTS

- Rehabilitation Program - \$11.5M
- Capacity Improvement Program - \$22.7M
- Capacity Improvement CCL Program - \$3.8M
- CWATS Program- \$4.9M

# ESTIMATED QUANTITIES

- 65km of asphalt recycling/resurfacing
- 150,000 sq.m. of pavement recycling
- 65,000 tonnes of Hot Mix Asphalt
- 35,000 tonnes of Granular 'A'

\*Overall, 17% increase from 2021

# FUNDING

- Federal Gas Tax - \$2.3M
- Canada Community Building Fund - \$2.1M  
(Ontario Community Infrastructure Fund)

\*CCBF (OCIF) gave the County the opportunity to add almost 12km of road to our asphalt program.

# PROGRAM BREAKDOWN

- 30+ Planned Construction Projects
  - 4 Bridge Projects (2 Construction, 2 Engineering)
  - 6 Culvert Projects (2 Construction, 4 Engineering)
  - 12 Road Projects
  - 4 Paved Shoulder Projects
  - 4 CWATS Projects
  - Miscellaneous Maintenance Projects

# REHABILITATION PROGRAM

## Bridge Projects - \$1,950,000

### Structure Rehabilitation

CR23 at South Branch Cedar Creek	Front Construction
CR50 at Wigle Creek	Sterling Ridge (pending approval)

### Structural Design and Engineering

CR9/CR10 at River Canard	Landmark Engineers
CR11 at River Canard	Haddad Morgan Associates



# Culvert Projects - \$1,090,000

## Structure Rehabilitation

CR12 at Essex Outlet Drain	Tender TBD
CR8 at Cameron Curry Drain	Tender March 2022

## Structural Design and Engineering

CR37 at Wiper Drain	CIMA+
CR31 at Irwin Drain	Hrycay Consulting Engineers
CR18 at Long Marsh Drain	R.C. Spencer Associates
CR50 at Tom Wright Drain	Stantec Consulting



# Road Projects - \$7,840,000

## Total Recycling/Resurfacing of 65km

Cold in Place Asphalt Work (CIREAM)	Coco Paving
Surface Asphalt over Cold in Place	Coco Paving
Hot Mix Overlay	Mill-Am
Paved Shoulder Works	Tender early April



## Road Projects - Distribution

- CR20 – Amherstburg
- CR50 – Amherstburg
- CR18 – Amherstburg
- CR5 – Amherstburg
- CR11 – Amherstburg/Essex
- CR20 – Essex
- CR18 – Essex
- CR50 – Essex
- CR8 – Essex/Tecumseh
- CR29 – Kingsville
- CR46 – Lakeshore
- CR2 – Lakeshore
- CR37 – Lakeshore (2 locations)
- CR42 – Lakeshore
- CR14 – Leamington
- CR37 – Leamington
- CR11 – Tecumseh

# CWATS

## CWATS Program - \$4,900,000

- CR2 – Lakeshore
- CR20 – Leamington
- CR34 – Kingsville
- CR18 – Essex/Amherstburg
- CR50 – Essex/Amherstburg



# CONNECTING LINK PROJECTS



- CR20 Paving – LaSalle
  - Turkey Creek to ETR
- CR16 Paving – Amherstburg
  - CR20 to Tofflemire
- CR1 Bridge Projects – Chatham-Kent
  - Burgess Drain (Tilbury East)
  - Government Drain #4 (Romney)

# PRESERVATION PROJECTS

- Roads, Bridges, Culverts - \$300,000
  - Base Repairs
  - Route and Seal
  - Deck, Soffit and Expansion Joint Repairs
  - Guiderail Repairs/Upgrades



## Capacity Projects - \$22.6 M

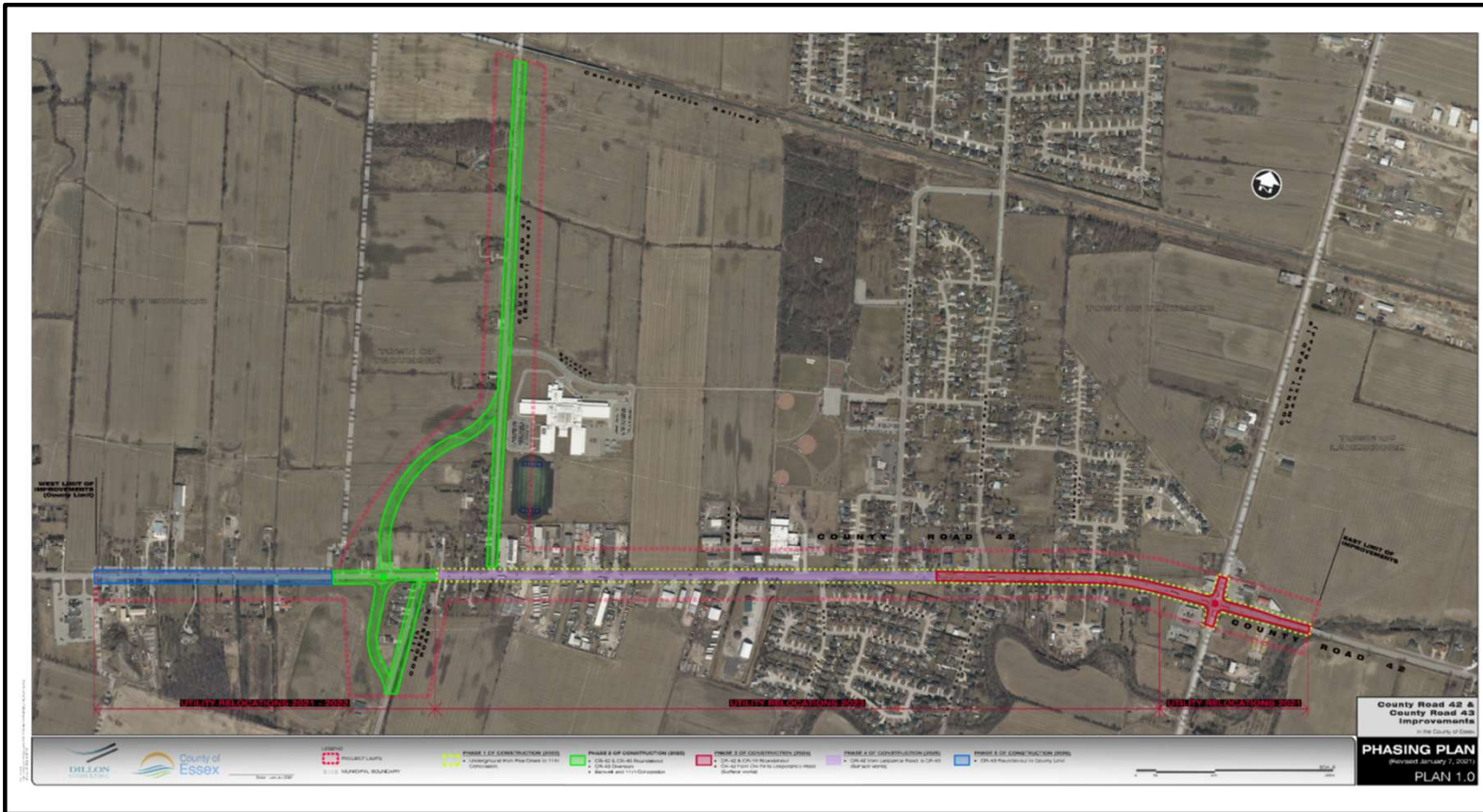
CR46 & Rochester Townline Roundabout	Design in 2022 Construction 2023
CR19 & CR22 South Leg Improvements	Feasibility Study 2022 Design 2022/2023
CR42 & CR43 Improvements	Utilities and Civil Works 2022 CR42 & CR43 Roundabout 2022-2023

## Corridor Alternatives and Strategies

CR22 Corridor Study (E Puce Road to W Belle River Road)
Transportation Master Plan Update
CWATS Master Plan Update

# CAPITAL WORKS

## CR42/CR43 Phasing Plan



Thank you for your support in delivering our annual programs. We look forward to working safely and cooperatively through the 2022 construction season.